

ΒΑΛΒΙΔΕΣ ΡΥΘΜΙΣΤΙΚΕΣ

**D921 Double Regulating Valve (DRV)
PN25 Bronze Balancing Valve**

The new D921 double regulating valve is manufactured in bronze in sizes from 1/2" to 2", and is designed to be more responsive to today's commissioning requirements.

Key features:

Positive flow control at all handwheel settings.

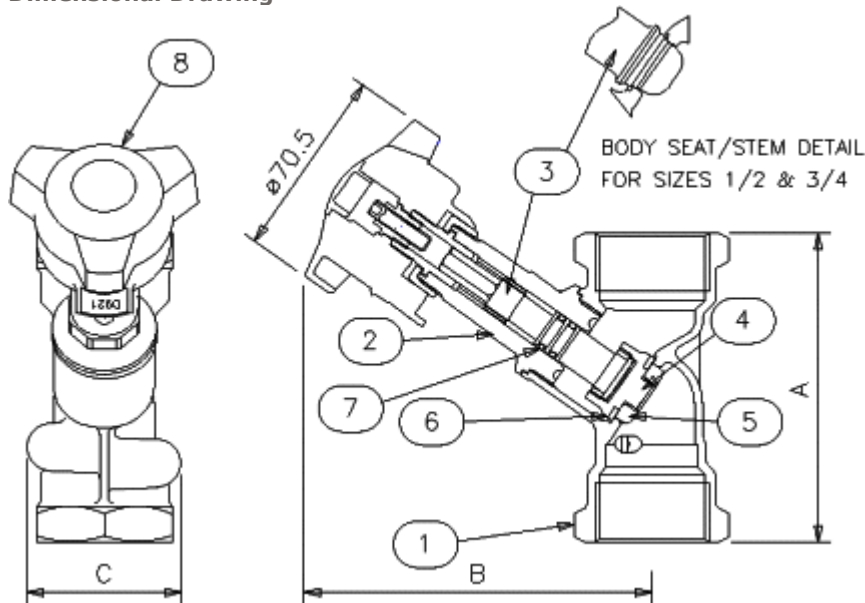
Upgraded to PN25 pressure rating.

Copper compression adapters in sizes 1/2" and 3/4"

WRAS Approved

Bill of Materials

Sequence	Description	Material	Sizes
1	Body	Bronze BSEN1982 CC491K	All
2	Bonnet	DZR Brass BSEN12165 CW602N	All
3	Stem	DZR Brass BSEN12164 CW602N	All
4	Disc	DZR Brass BSEN12165/BSEN12164 CW602N	1 - 2 only
5	Balancing Cone	DZR Brass BSEN12164 CW602N	1 - 2 only
6	Disc Face	P.T.F.E.	1 - 2 only
7	'O' Ring Seal	EPDM Rubber (BS4518 0106-24)	All
8	Handwheel	Plastic	All

**Dimensional Drawing**

Dimensions and Weights				
Size	Weight (kg)	A (mm)	B (mm)	C (mm)
1/2"	0.65	87	105	46
3/4"	0.72	96	106	51
1"	0.91	100	127	56
1.1/4"	1.1	114	128	57
1.1/2"	1.44	125	143	61
2"	1.9	146	144	75

Pressure Rating: PN25

Installation Instructions:

In two unit systems, the D921 has sufficient authority to give effective regulation over the range of flows covered by matching flow measurement devices/valves.

1/2" and 3/4" valves come with compression adapters as standard for optional connection to copper pipe.

UK End Connection: BS21 Parallel

US End Connection: ANSI B1.20.1

Operating Instructions:

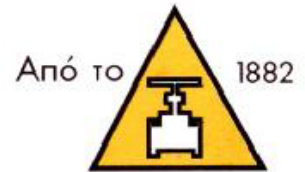
The double regulating feature allows valve opening to be set with an Allen key. Operation of the valve is by means of the Microset Handwheel.

Specification:

Y-Pattern globe valves having characterised throttling disk lending towards equal percentage performance.

This valve is intended for group 2 liquids only, as defined by the Pressure Equipment Directive 97/23/EC.

Temperature operating range: -10 to 120 degrees celsius.



ΧΡΥΣΑΦΙΔΗΣ Α.Ε.