

ΑΝΟΞΕΙΔΩΤΟΙ ΣΦΥΓΚΤΗΡΕΣ ΕΠΙΣΚΕΥΗΣ

Repair Clamp Style RS-1



ΧΡΥΣΑΦΙΔΗΣ Α.Ε.



Sttainless steel repair clamps Style RS-1 are used for the permanent repair of broken and damaged pipes

for water, gas and petrochemical fluids

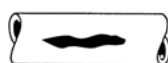
Following damages can be repaired:



Pipe connection



Broken pipes



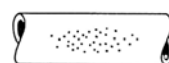
Longitudinal cracks



Damages due to hot taps



Misaligned pipes



Pin holes

Romacon repair Clamps should be used under following conditions:

- ☐ The width of the clamp should be at least equal to the pipe OD
- ☐ The width of the clamp should be 150 mm greater than the length of a crack on pipes with outside diameter up to 350 mm. On larger pipes this should be at least 200 mm
- ☐ For PVC pipes, the width of the clamps should be 50 % longer (we prefer that you consult your Romacon distributor).
- ☐ The maximum allowable distance between two pipe ends should not exceed 10 mm
- ☐ The maximum allowable deflection is 2°
- ☐ The maximum allowable offset should not exceed 3 mm

When other problems occur, please do not hesitate to contact your Romacon distributor

The clamps can be used for the repair of following pipe types:

- Ductile Iron (DI)
- Cast Iron (CI)
- Steel (St.)
- PE coated steel
- Asbestos Cement (AC)
- PVC
- GRP (with restrictions) *
- PE (with restrictions) *

Pressure ratings (for water)*

Pressure ratings depend on the type of break or damage, pipe OD medium etc.

In general, RS-1 clamps for use on pipes of DN 40 up to including DN 150 can resist a pressure of 16 bar.

RS-1 clamps for use on pipes of DN 175 up to including DN 300 can resist a pressure of 10 bar.

*A description of the testing conditions under which the clamps have been tested and testing methods is available on request. Please contact Romacon or your distributor for pressures on gas pipes.

Material specification:

- ☐ Metal parts: stainless steel AISI 304 or AISI 316L.
- ☐ All parts have been deburred and are passivated to return the corrosion resistance after the welding process to its original state.
- ☐ Single band (one section). For detailed working ranges please see our pricelist.
- ☐ Rubber gaskets SBR / NBR / EPDM** (other rubber types on request). The rubber is tapered and has a waffle pattern.
- ☐ Bridge plate is vulcanised into the rubber gasket
- ☐ U shaped lifterbar.
- ☐ Bolts are PTFE (Teflon™) coated to prevent galling.
- ☐ FOP (Delrin™) washers to reduce friction between nut and lifterbar, which also function as a torque indicator.
- ☐ No loose parts that may get lost during installation.
- ☐ No special tools required, a simple wrench will do the job.
- ☐ Special tape is used to fix the rubber gasket to the stainless steel band. The tape is flexible and reinforced with glassfiber thread to resist hot and humid climatological circumstances and guarantee a long storage capability.
- ☐ Under most circumstances the clamps can be installed without releasing the pressure of the pipe.
- ☐ The clamps are separately packed into strong double rib cartons. For export overseas we use strong seaworthy wooden crates

Romacon is certified ISO 9001.

Available sizes

Romacon RS-1 clamps are available from range 44-51 up to including range 335-346 mm.

Available lengths: 150 / 200 / 250 / 300 / 400 / 500 / 600 mm

We will send you a pricelist with all available ranges and lengths on request.

We are able to manufacture any range or length that you may require.

Available rubber gaskets**

The Romacon clamps can be supplied with following types of rubber:

Rubber	: SBR (50° Shore A)	NBR (50° Shore A)	EPDM (50° Shore A)
Temperature	: -40° + 85° C -40° + 185° F	- 40° + 106° C - 40° + 225° F	up to 140° C up to 285° F
Application	: potable water, mild acids and alkali etc.	gas, water, oil and several chemicals	hot water / steam and several chemicals
Quality	: ISO 4633	ISO 6447	ISO 4633

A list of specific resistances is available on request

Romacon is able to supply several certified rubber qualities:

Europe : EN 681 / EN 682 / EN 549
 Germany : DVGW - DIN 3535 / KTW
 UK : BCG LC6/PS / BS 2494 type W / BS 6920
 Belgium : Belgaqua-hydrocheck
 France : XP P 41-250



**Other rubber qualities are available: for example Viton, Silicone rubber and white NBR (for the food industry). For information and prices please contact your Romacon distributor.